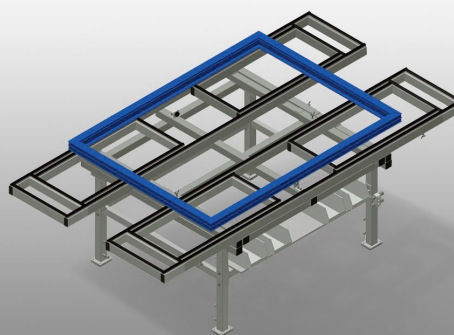


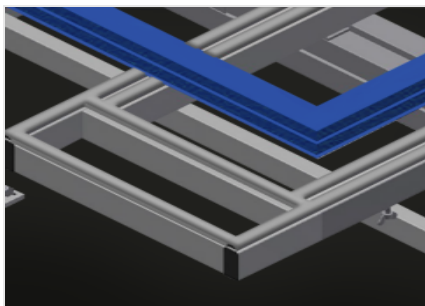


## MTA 3000

### Assembly tables

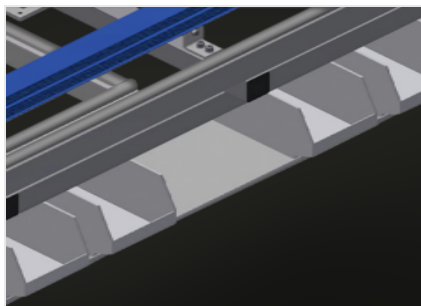


Assembly table expandable for all work tasks on frames and sashes. Stable steel construction. Universal assembly table. Pull-outs on four sides. Ideal for large elements. Adjustable height. Table supporting surface with plastic slide bars. Practical storage area under the table surface. Four PVC containers for small accessories, hardware and screws. 4-fold compressed air supply. Simple installation with a modular system design. Options: also available with brush strips on request; also available with felt strips on request (for wooden profiles); also available with rubber strips on request (for aluminium profiles); castors (cimpl.).



### Supporting surfaces

Supporting surfaces with plastic slide bars



### Storage area

Practical storage area under the table surface with 4 PVC containers for small accessories, hardware and screws



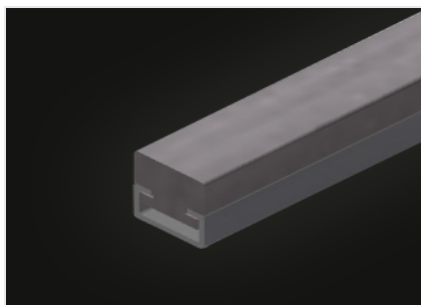
### Height adjustment

Adjustable height; working height can be set to 850 - 1.000 mm by means of adjustable feet



### Brush strip (Optional)

Supporting surfaces with brush strip



### Felt strip (Optional)

Supporting surfaces with felt strip



### Casters (Optional)

Mobile unit: two casters with brake and two fixed rollers provide mobility in all directions



MTA 3000 / ASSEMBLY TABLES

CHARACTERISTICS

Length (mm)	2.400 ÷ 4.000
Width (mm)	1.300 ÷ 1.900
Height (mm)	850 ÷ 1.000
Weight (kg)	160
Adjustable height	●
Storage area under the table surface	●
PVC containers	4
4-fold compressed air supply	●
Table brush strip supporting surface	○
Table felt profile strip supporting surface	○
Table rubber knob profile	○
Castor wheel Stand Alone (2 castors + 2 fixed)	○

Included ● Available ○