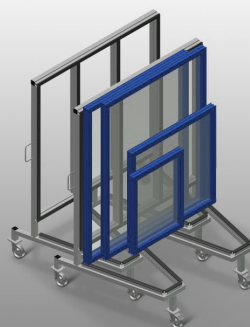
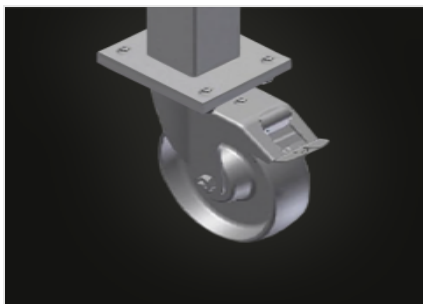


**KW 3**

## Transport and trolleys

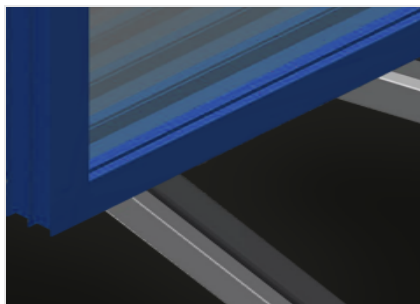


Commissioning trolley for in-house transportation of window elements. Stable steel construction. For in-house transportation. Profile supports with rubber surface. Can be nested when not loaded – a space-saving feature. Four castors, two of which have a fixing brake.



### **Casters**

Four casters, two of which have a fixing brake, provide a high degree of mobility and easy, safe handling



### **Supports with rubber strip**

Supporting surfaces equipped with rubber strips to protect profiles from damage



### **Transport handles**

Transport handle on both sides for mobility

## CHARACTERISTICS

Length (mm)	1.600
Width (mm)	1.130
Height (mm)	1.960
Weight (kg)	90
Load capacity (kg)	400
Swivel castors diameter (mm)	125
Swivel castors	4
Swivel castors with locking stop	2
Horizontally stackable when not loaded	●

Included ● Available ○