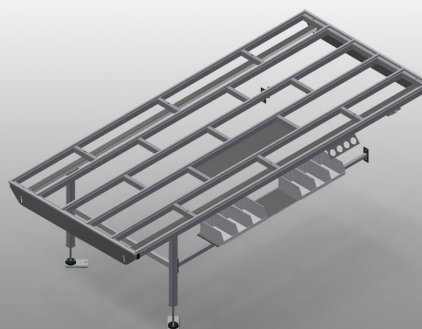


HT 3000 E

Assembly tables



Modular work table for a production line (basic module). Stable steel construction. Universal system of work tables for lines with a continuous production flow. Modular system: basic module + additional module. Add-on elements for individualised expansion. Additional modules are easy to install. Versatile work table for all applications: for example, as an individual table in the production flow, as an in-line workstation for assembly work, as a work table for gasket insertion, for the post-processing of special-order production items or as a buffer zone. Table supporting surface with plastic slide bars. Adjustable height. Simple installation with a modular system design.



Supporting surfaces

Supporting surfaces with plastic slide bars



Storage tray

Storage tray for setting down tools and accessories



Height adjustment

Adjustable height; working height can be set to 850 - 1,000 mm by means of adjustable feet



Storage area (Optional)

Storage area with 6 plastic trays for small accessories, hardware and screws



Brush strip (Optional)

Supporting surfaces with brush strip



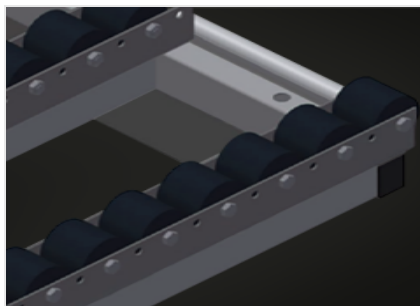
Felt strip (Optional)

Supporting surfaces with felt strip



Tool rack (Optional)

Tool rack for pneumatic or electrical tools



Roller support compl. (Optional)

Hard plastic rollers with polyamide coating, on plain bearings, load per roller 60 kg, convenient for transport and handling of PVC elements



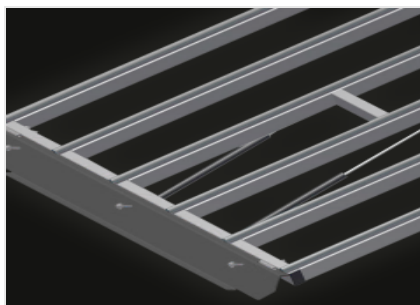
End rack (Optional)

End rack for HT



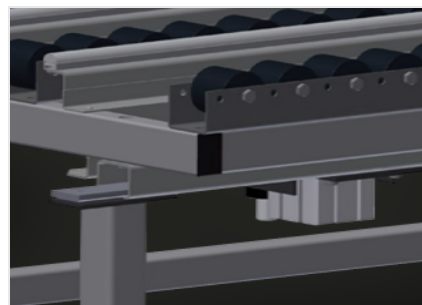
End strip with knob profile (Optional)

End strip with knob profile for HT



Fold-up pass-through section for HT (Optional)

Roller support, compl., for fold-up passthrough section



Pneumatic lifting unit (Optional)

Lifting unit L = 3.000 mm

HT 3000 E / ASSEMBLY TABLES
CHARACTERISTICS

Length (mm)	3.000
Width (mm)	1.300
Height (mm)	850 ÷ 1.000
Weight (kg)	100
Table supporting surface with plastic slide bars	●
Table brush strip supporting surface	○
Table felt profile strip supporting surface	○
Table rubber knob profile	○
Roller support	○
Tool holder	○
4-fold compressed air supply	○
End strip with knob profile	○
End rack	○
Fold-up walk-through section	○
Roller support for fold-up walk-through section	○
Storage tray	○
Lifting unit	○

Included ● Available ○