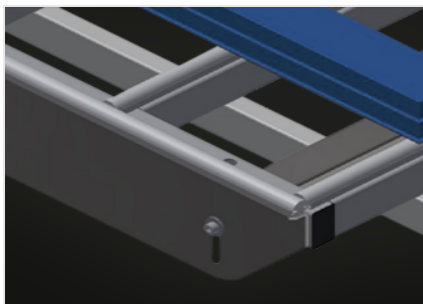


HT 1000 E

Assembly tables

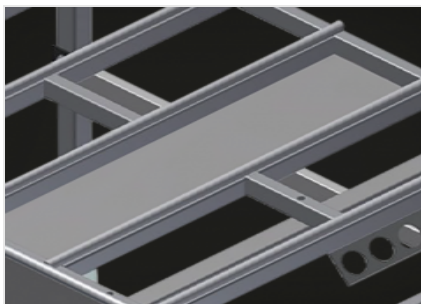


Modular work table for a production line (basic module). Stable steel construction. Universal system of work tables for lines with a continuous production flow. Modular system: basic module + additional module. Add-on elements for individualised expansion. Additional modules are easy to install. Versatile work table for all applications: for example, as an individual table in the production flow, as an in-line workstation for assembly work, as a work table for gasket insertion, for the post-processing of special-order production items or as a buffer zone. Table supporting surface with plastic slide bars. Adjustable height. Simple installation with a modular system design.



Supporting surfaces

Supporting surfaces with plastic slide bars



Storage tray

Storage tray for setting down tools and accessories



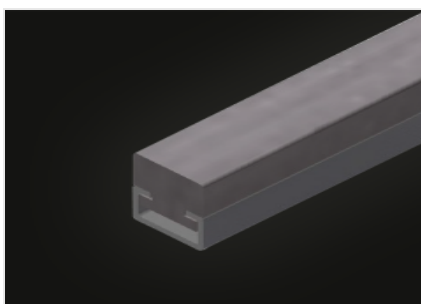
Height adjustment

Adjustable height; working height can be set to 850 - 1,000 mm by means of adjustable feet



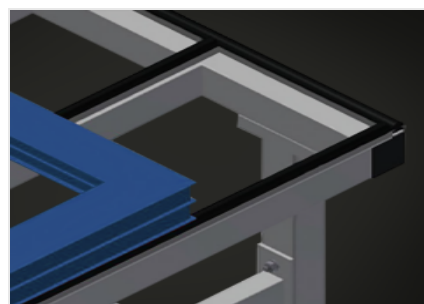
Brush strip (Optional)

Supporting surfaces with brush strip



Felt strip (Optional)

Supporting surfaces with felt strip



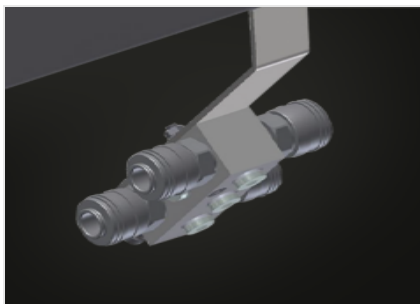
Rubber strips (Optional)

Supporting surfaces with rubber-knob profile



Tool rack (Optional)

Tool rack for pneumatic or electrical tools



4-fold compressed air connection (Optional)

4-fold compressed air connection for connecting compressed-air tools



Roller support compl. (Optional)

Hard plastic rollers with polyamide coating, on plain bearings, load per roller 60 kg, convenient for transport and handling of PVC elements



End rack (Optional)

End rack for HT



End strip with knob profile (Optional)

End strip with knob profile for HT

**HT 1000 E / ASSEMBLY TABLES****CHARACTERISTICS**

Length (mm)	1.000
Width (mm)	1.300
Height (mm)	850 ÷ 1.000
Weight (kg)	60
Adjustable height	●
Table supporting surface with plastic slide bars	●
Table brush strip supporting surface	○
Table felt profile strip supporting surface	○
Table rubber knob profile	○
Roller support	○
Tool holder	○
4-fold compressed air supply	○
End strip with knob profile	○
End rack	○
Fold-up walk-through section	○
Roller support for fold-up walk-through section	○

Included ● Available ○