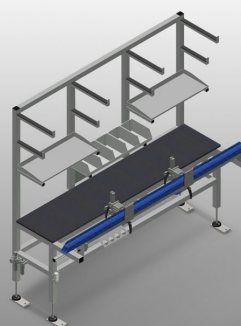
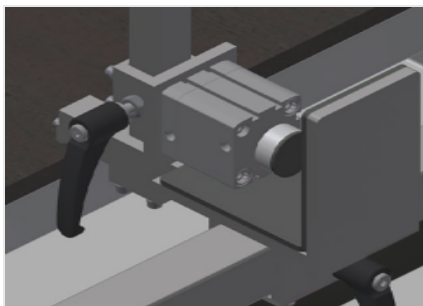


TMT 2000

Assembly tables

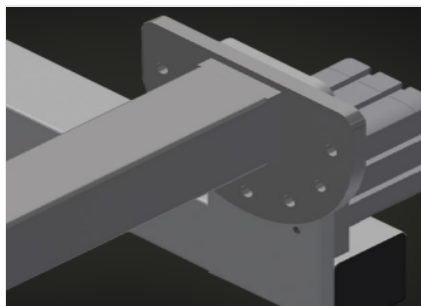


Assembly table for pre-assembly of hardware and gaskets. Stable steel construction. Work table for all pre-assembly tasks for hardware and gaskets on windows and doors. Equipped with two clamps. Clamping device for profiles with a depth of 45 - 120 mm and facing width of 50 - 150 mm. Clamping position can be adjusted. Clamping cylinder is activated by a foot switch. 180° pivoting feature for the clamped profiles in 30° steps via a foot switch, lockable. Support arms for long parts. Two storage areas for setting down tools and small parts. Drawers for tools. Rack for screw driving unit or drill. 4-fold compressed air supply. Double two-pin grounded socket.



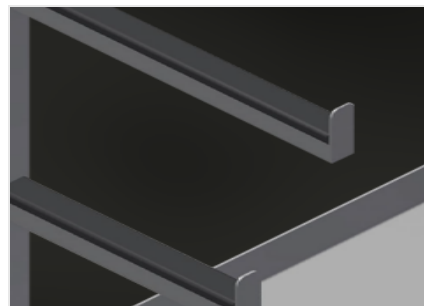
Clamping device

Clamping device for profiles with a depth of 45 - 120 mm and facing width of 50 - 150 mm. Clamping position adjustable in the longitudinal direction of the profile, clamping cylinder actuated via a foot switch



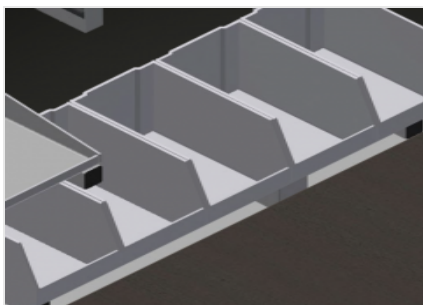
Pivoting mechanism

180° pivoting feature for the clamped profiles in 30° steps via a foot switch, lockable



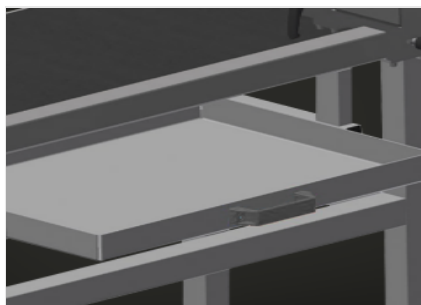
Support arms

Support arms for long parts such as multiple locking hardware. Storage areas for tools and small parts



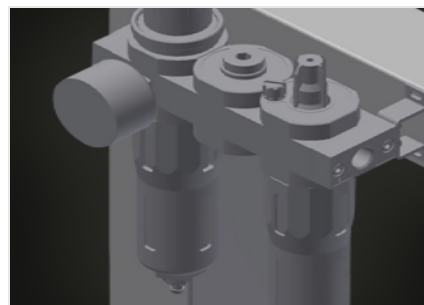
Storage area

Storage area with 5 plastic trays for small accessories, hardware and screws



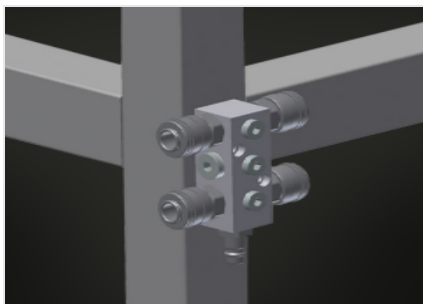
Drawer

Drawer for tools. Rubber coated tool trays



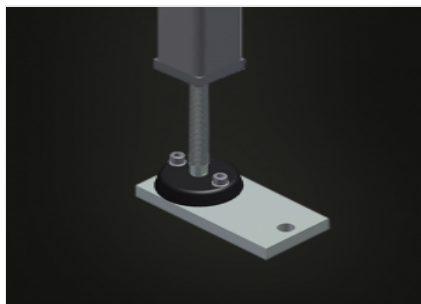
Maintenance unit

Maintenance unit for compressed-air tools



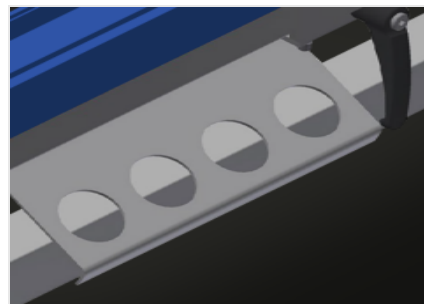
4-fold compressed air connection

4-fold compressed air connection for connecting compressed-air tools



Articulated foot

Working height can be set to 850 – 1.000 mm by means of adjustable feet



Tool rack

Tool rack for pneumatic or electric tools

**TMT 2000 / ASSEMBLY TABLES****DIMENSION AND WEIGHT**

Length (mm)	2.000
Width (mm)	850
Height (mm)	1.970
Weight (kg)	145

CHARACTERISTICS

Clamps	2
Storage areas for setting down tools and small parts	2
Drawers for tools	●
Rack for screw driving unit or drill	●
4-fold compressed air supply	●
Operating air pressure (bar)	7
Air consumption approx. (l/min)	20
Double two-pin grounded socket	●

Included ● Available ○