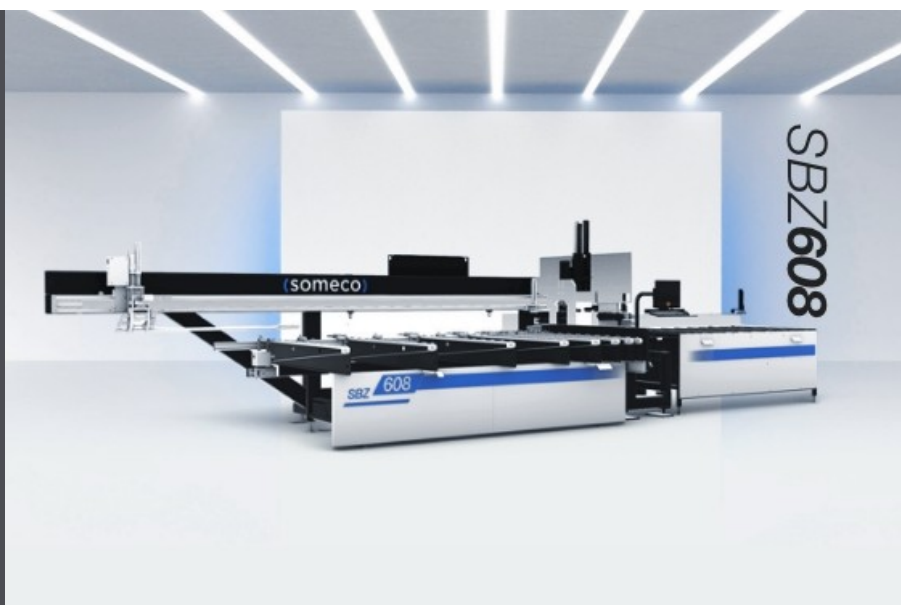




SBZ 608

Cutting and machining centers



Downstream centre for reinforcement screw driving, drilling and routing cut-to-length profiles for window, door and curtain wall manufacturing with and without steel reinforcement. Portal design for high profile cross-sections and process-optimised throughput. Work sequence as needed, either from the left towards the right or the reverse. Lifting function for gap-free loading of the feed magazine. Profiles are guided on rollers to ensure gentle treatment of the profile and protective film as well as completion of long machining operations without re-clamping. Internal gripper avoids damaging the profiles. Integrated measuring sensors for part length monitoring. Outfeed for parts via discharge table. Industrial PC with Windows operating system. Barcode scanner. Options: additional reinforcement screwdriver units for multiple types of screws; upending unit for profiles that are difficult to clamp; noise abatement enclosure.

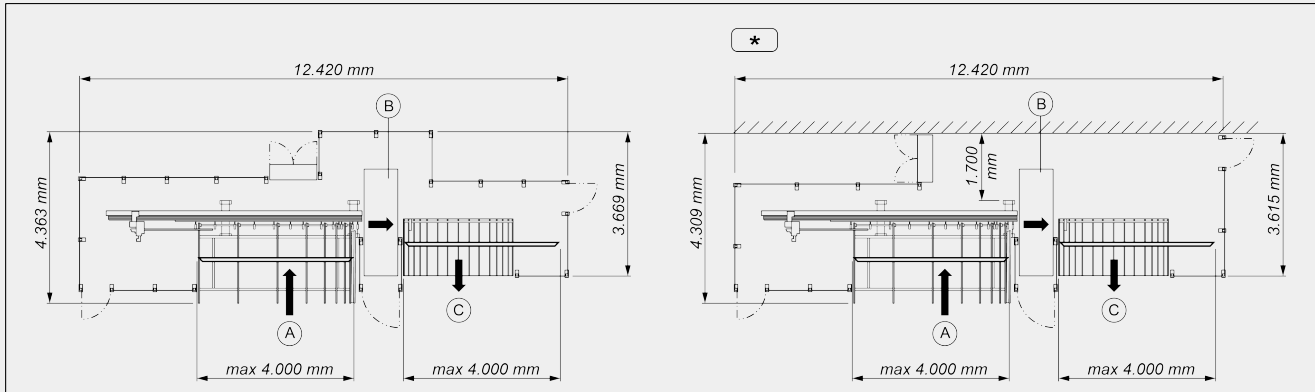
Voilàp S.p.A.
Via Archimede, 10
41019 - Limidi di Soliera (MO)
ITALY

Tel 059 895411
Fax: 059 859404
P.IVA e C.F. 02057270361
info@somecopvc.com
www.somecopvc.com

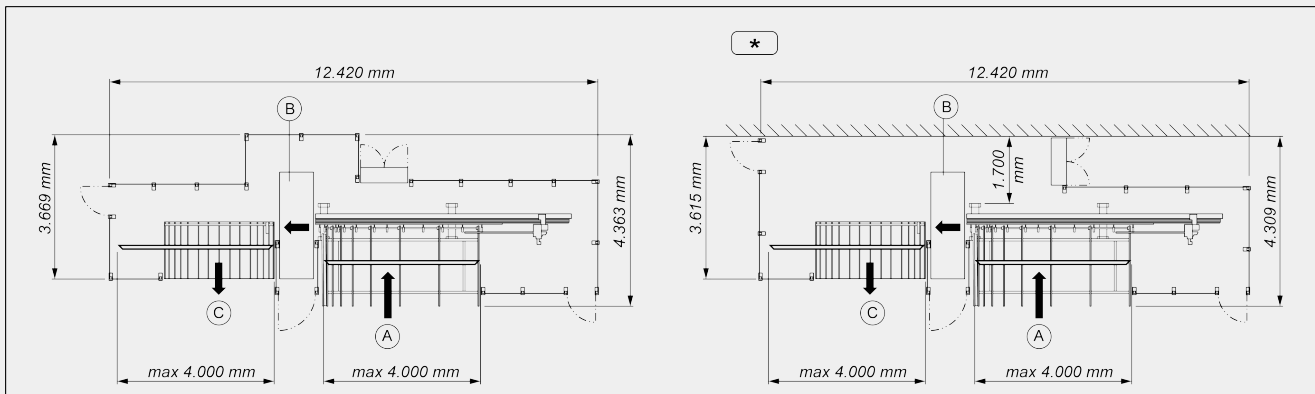
The right to make technical alterations is reserved.

LAYOUT

Left version (left to right)



Right version (right to left)



- A - Loading magazine
- B - Machining unit
- C - Unloading magazine
- * - Standard version

The overall dimensions may vary depending on the product configuration.

AXIS TRAVEL

Y AXIS (transversal) (mm)	370
Z AXIS (vertical) (mm)	270
X AXIS (bar positioning) (mm)	5.620
Y1 AXIS (gripper transversal positioning) (mm)	130
Z1 AXIS (gripper vertical positioning) (mm)	145
A1 AXIS (pliers rotation)	280°



WORKABLE SIDES

Number of faces (top, side, bottom) 1 + 2 + 1

LOADING UNIT: PROFILE POSITIONING

- Workpiece reference stop near the working unit
Maximum loadable length (mm) 4.000
Belt loading magazine for 14 profiles with a length varying from 350 mm to 4.000 mm, max. weight 40 kg
Loading feeder with 2 controlled axes for workpieces of up to 4.000 mm with gripper
Electronically controlled 0 - 180° collet rotation (C1 axis)
Minimum machinable profile section W x H (mm) 30 x 30
Maximum profile height W x H (mm) 135 x 205

WORKPIECE LOCKING

- Automatic fixed clamping system before machining area
Automatic fixed clamping system after machining area
Clamping system standard, high 20 mm
Clamping system for profile adapted to profile system

FUNCTIONS

- Screwing operation for reinforcement steel
Milling, drilling operations of the piece direct from the profiled bar
Hand held scanner for bar code
Rotary axis gripper
Blow-off devices per additional working unit
Tool package 16 units

SUPPORT BASE

Monolithic in electrowelded and standardised steel

UNLOADING UNIT

Unloading table with a pneumatic pusher for workpieces of up to 4000 mm
Belt magazine unloading depth (mm) 1.900

ELECTRIC CABINET COOLING

Electrical cabinet with air conditioner for operating temperature < 45 °C	●
Electrical panel and CN conditioner for operating temperatures < 50°C	○

ELECTROSPINDLES FOR PVC MILLING (MANUAL CHANGE)

Maximum power in S6 (kW)	0,75
Maximum speed (rpm)	16.300
Maximum diameter (mm)	12

ELECTROSPINDLES FOR HANDLE DRILLING (MANUAL CHANGE)

Maximum power in S6 (kW)	1,6
Maximum speed (rpm)	2.456
Maximum diameter for 3-Spindels (mm max.)	12 / 14 / 12

ELECTROSPINDLES FOR SMALL DIAMETER PVC & STEEL (MANUAL CHANGE) OPTIONAL

Maximum power in S6 (kW)	1,2
Maximum speed (rpm)	9.820
Maximum diameter (mm)	12

ELECTROSPINDLES FOR END MILLING (MANUAL CHANGE) OPTIONAL

Maximum power in S6 (kW)	1,6
Maximum speed (rpm)	5.600
Maximum diameter (mm)	160

Included ● Available ○