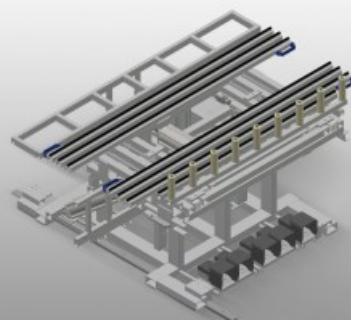


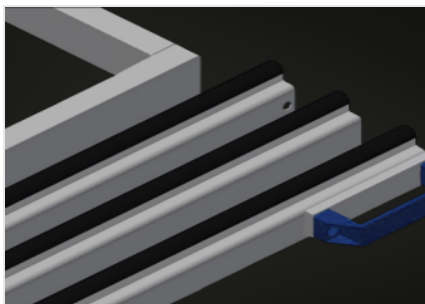


## RMT 1400

### Assembly tables

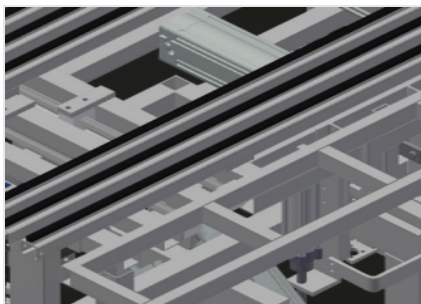


Stable steel construction. Tilting assembly table with draw-in unit. Basic dimensions 1.400 x 2.000 mm, when pulled out 2.000 x 2.800 mm. Pull-out work platform consisting of two supporting beams, clad with brush strip. Minimum size of work platform 2.000 x 1.000 mm. Maximum size of work platform 2.800 x 2.000 mm. Two supporting beams form a frame, the height of which can be adjusted pneumatically and continuously from 1.000 to 2.000 mm. Lifting and tilting unit with foot valve. Fixed roller conveyor with lifting unit, 100 mm. Lifting unit for transferring / receiving from the roller conveyor. Roller conveyor open at front for drawing in to transfer roller conveyor. Mobility unit with flanged rollers and pneumatic fixing brake with operation from side. Optional: table supporting surface with felt profile strip for RMT 1400; auxiliary clamp with hand valve.



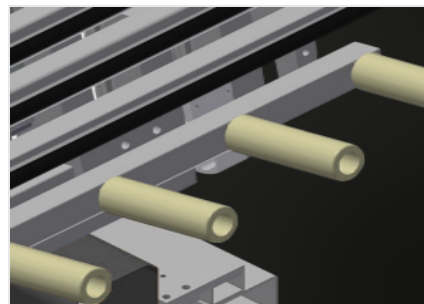
### Supporting surface

Table supporting surface with brush strips



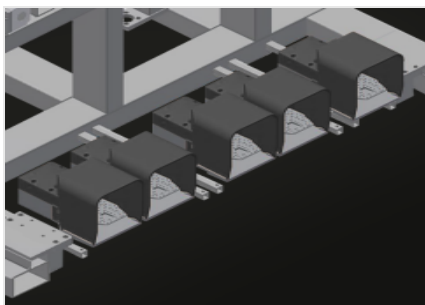
### Worktable

Height of support table adjustable to 230 mm below the work surface.  
Depth of support table 250 mm, length 2.000 mm



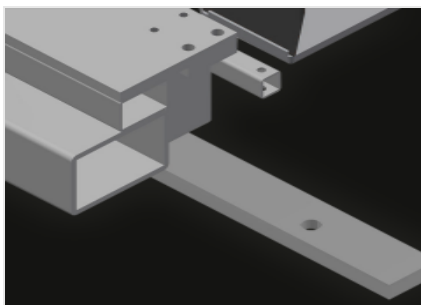
### Roller support

Roller conveyor open at front for drawing in to transfer roller conveyor.  
Fixed roller conveyor with lifting unit, 100 mm. Lifting unit for transferring / receiving from the roller conveyor



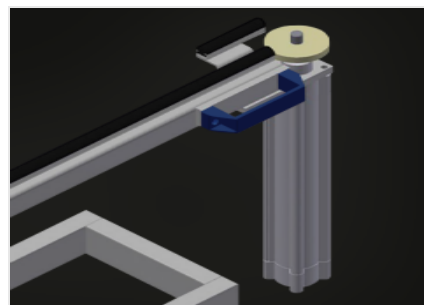
### Foot switch

Control via foot valve. Lifting and tilting unit with foot valve



### Mobility unit

Mobility unit with flanged rollers and pneumatic fixing brake with operation from both sides



### Auxiliary clamp (Optional)

Auxiliary clamp with hand valve.  
Auxiliary clamps provide extra security when machining.



RMT 1400 / ASSEMBLY TABLES

CHARACTERISTICS

Length (mm)	2.000
Width (mm)	1.620
Weight (kg)	450
Load capacity (kg)	300
Working height (mm)	950
Roller conveyor length (mm)	1.600
Roller diameter (mm)	50
Roller length (mm)	150
Tilt of supporting surface	8°
Depth of support table (mm)	200
Length of support table (mm)	2.000

Included ● Available ○