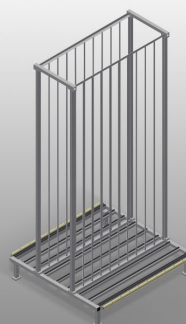


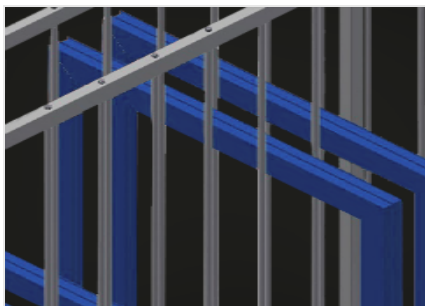


RFR 10/01

Rack systems

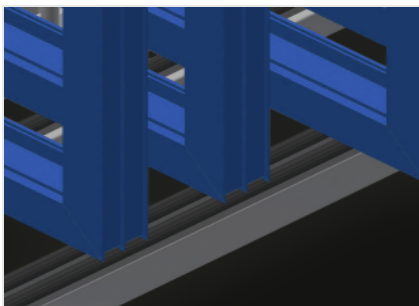


Rack for storage of frame elements. Stable steel construction. Rack for storage of frames. The individual elements are available for direct access. Specially designed for integration in assembly lines. Access is possible from both sides. Floor support equipped with knob profile. Compartment separating bars covered with protective tubing. Supporting surface with rollers for even easier loading and unloading.



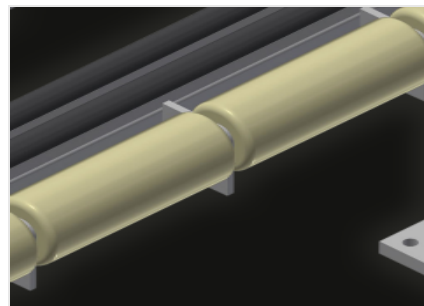
Compartments

All supporting surfaces have a non-slip PVC cladding which protects surfaces from damage during storage



Supports

Lower supporting surfaces with knob profile to protect profiles from damage



Rollers

Rollers are mounted to every compartment for even easier loading and unloading of heavy or large elements

DIMENSION AND WEIGHT

Length (mm)	1.650
Width (mm)	1.620
Height (mm)	3.375
Weight (kg)	250

STORAGE CAPACITY

Compartments	10
Compartment width (mm)	130
Compartment height (mm)	3.010
Load capacity (kg)	800

CHARACTERISTICS

Floor support equipped with knob profile	●
Compartment separating bars covered with protective tubing	●
Supporting surface with rollers	●

Included ● Available ○