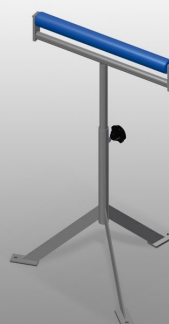




MST 1000

Assembly tables

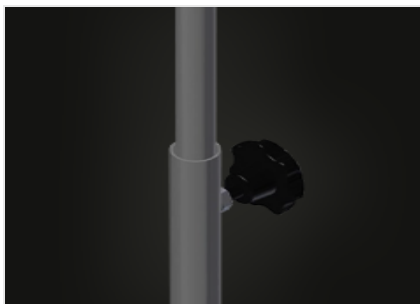


Stable steel construction galvanised. Plastic support rollers. Height is adjustable.



Plastic rollers

Support rollers L = 500 mm



Height adjustment

Adjustable height 700 - 1.100 mm



MST 1000 / ASSEMBLY TABLES

CHARACTERISTICS

Length (mm)	550
Width (mm)	450
Support roller diameter (mm)	50
Support roller length (mm)	500
Adjustable height	700 ÷ 1.100
Weight (kg)	10

Included ● Available ○