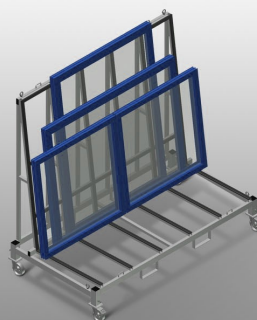


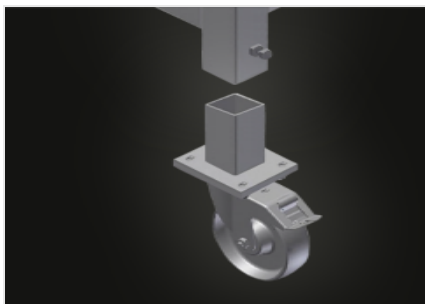


## KW 2

### Transport and trolleys

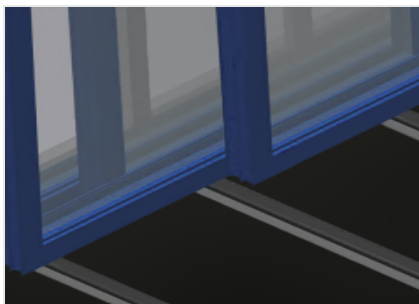


Commissioning trolley for in-house and truck transportation of window elements. Stable steel construction. Trolley for in-house and external transportation. Openings for forklift transportation. Four hooks for crane transportation. Four lashing strap attachment points. Profile supports with rubber surface. Castors can be removed for increased stability of the commissioning trolley in a lorry. Four castors, two of which have a fixing brake.



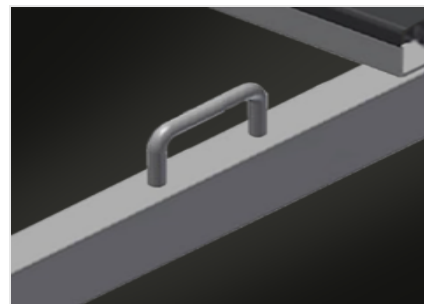
### Removable casters

Casters can be removed for increased stability of the commissioning trolley in a lorry. Four casters, two of which have a fixing brake, provide a high degree of mobility and easy, safe handling



### Supports with rubber strip

Supporting surfaces equipped with rubber strips to protect profiles from damage



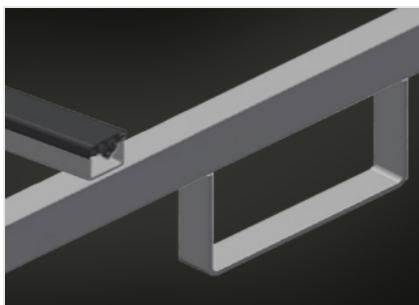
### Lashing strap attachment points

With four lashing strap attachment points



### Crane attachment points

Equipped with four crane attachment points



### Forklift openings

Equipped with four forklift openings



**KW 2 / TRANSPORT AND TROLLEYS**

**CHARACTERISTICS**

Length (mm)	2.025
Width (mm)	1.090
Height (mm)	1.880
Weight (kg)	130
Load capacity (kg)	600
Swivel castors diameter (mm)	125
Swivel castors	4
Swivel castors with locking stop	2
Openings for forklift transportation	●
Hooks for crane transportation	4
Lashing strap attachment points	4
Trolley also for external transportation	●
Support height (mm)	1.500
Effective width (mm)	800
Castors can be removed for commissioning trolley in a lorry	●

Included ● Available ○