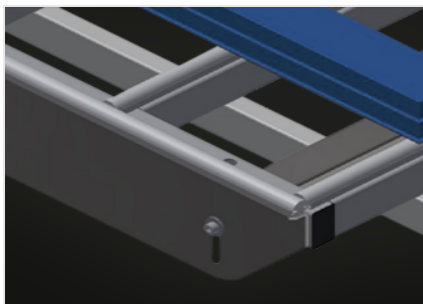


## ***HT 1000 E***

### Assembly tables

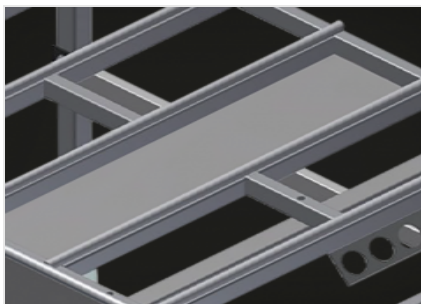


Modular work table for a production line (basic module). Stable steel construction. Universal system of work tables for lines with a continuous production flow. Modular system: basic module + additional module. Add-on elements for individualised expansion. Additional modules are easy to install. Versatile work table for all applications: for example, as an individual table in the production flow, as an in-line workstation for assembly work, as a work table for gasket insertion, for the post-processing of special-order production items or as a buffer zone. Table supporting surface with plastic slide bars. Adjustable height. Simple installation with a modular system design.



### Supporting surfaces

Supporting surfaces with plastic slide bars



### Storage tray

Storage tray for setting down tools and accessories



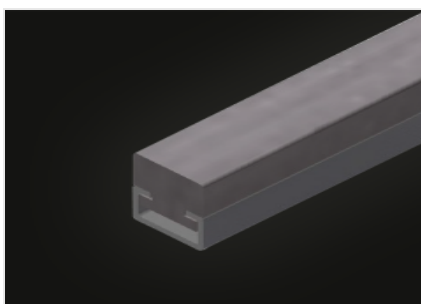
### Height adjustment

Adjustable height; working height can be set to 850 - 1,000 mm by means of adjustable feet



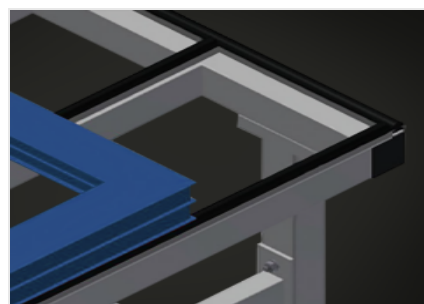
### Brush strip (Optional)

Supporting surfaces with brush strip



### Felt strip (Optional)

Supporting surfaces with felt strip



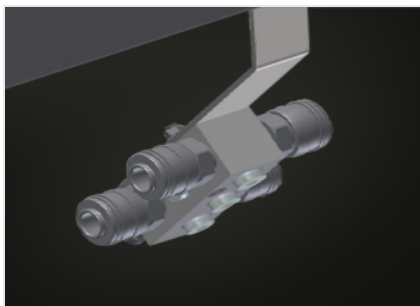
### Rubber strips (Optional)

Supporting surfaces with rubber-knob profile



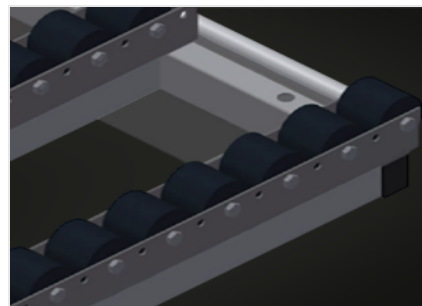
**Tool rack (Optional)**

Tool rack for pneumatic or electrical tools



**4-fold compressed air connection (Optional)**

4-fold compressed air connection for connecting compressed-air tools



**Roller support compl. (Optional)**

Hard plastic rollers with polyamide coating, on plain bearings, load per roller 60 kg, convenient for transport and handling of PVC elements



**End rack (Optional)**

End rack for HT



**End strip with knob profile (Optional)**

End strip with knob profile for HT

**HT 1000 E / ASSEMBLY TABLES****DIMENSION AND WEIGHT**

Length (mm)	1.000
Width (mm)	1.300
Height (mm)	850 ÷ 1.000
Weight (kg)	60

**SUPPORTING SURFACE**

Adjustable height	●
Table supporting surface with plastic slide bars	●
Table brush strip supporting surface	○
Table felt profile strip supporting surface	○
Table rubber knob profile	○
Roller support	○
Tool holder	○
Roller support for fold-up walk-through section	○
Fold-up walk-through section	○

**CHARACTERISTICS**

End strip with knob profile	○
End rack	○
4-fold compressed air supply	○

Included ● Available ○