

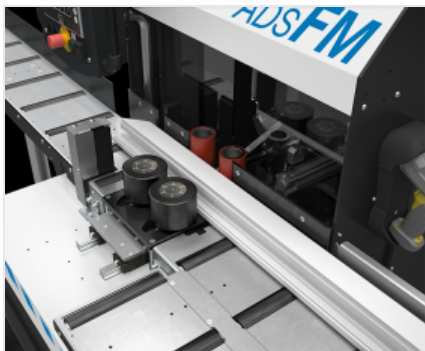


ADS FM

Complementary machines



Screwing centre with one controlled axis, for screwing the aluminum or steel reinforcement into profiles of PVC frames. The screws are loaded automatically; the screwing unit is adjustable in height with a 6-position presetting. Optionally, this adjustment can be managed via software on NC Z-axis. The work cycle is managed with an intuitive software that guides the operator through simple indications on the touch screen display. Direct connection to the PC is possible using the ethernet socket (optional).



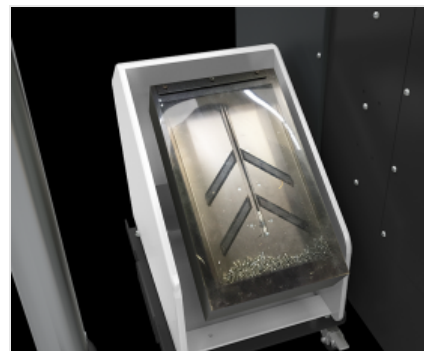
Drive rollers

The profile is conveyed using motorised rollers via pneumatic hold-down devices. According to the type of profile, it is possible to use suitable counterblocks for a better clamping and driving of the workpiece. The operation is activated by pressing the pedal which actuates the clamping of the workpiece and its screwing.



Screwing with automatic feed

Thanks to ADS FM the screwing process becomes quick and easy: in fact just by pressing the pedal, profile clamping and screwing with automatic feed are activated simultaneously. In the basic version, the screwdriver height can be adjusted to 6 positions with presetting. As an option, it is possible to manage this adjustment via NC through the vertical axis.



Screw feeder

It allows feeding screws automatically in sequence and aimed correctly. Optionally, it is possible to add another screw feeder in order to have a greater production cycle efficiency.



Loading/unloading roller conveyor

An infeed roller conveyor and an outfeed roller conveyor serving for profile loading and unloading, provide an easy handling of the workpiece, thus requiring just minimum effort from the operator.



Control panel

The operator interface with 5.7" touch screen display allows identifying the workpiece position where the screw will be screwed both on the horizontal and vertical axis. This machine features a USB port to make data transfer easier.



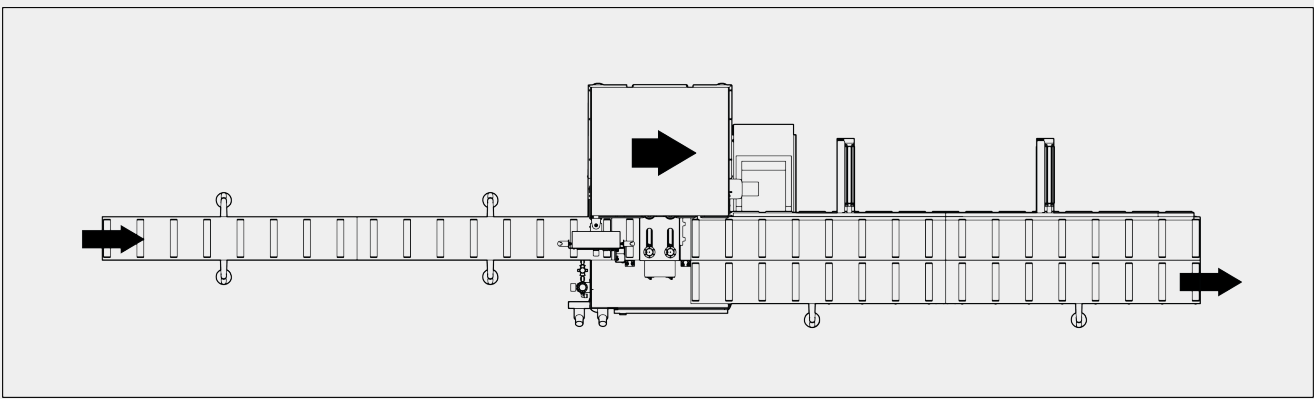
ADS FM / COMPLEMENTARY MACHINES

MACHINE SPECIFICATIONS

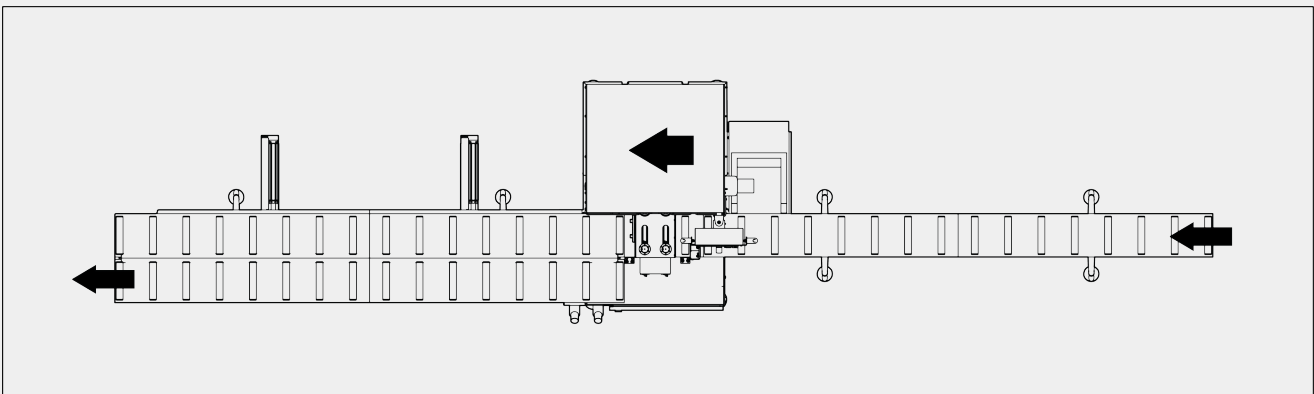
- Regulation of the screwing depth and strength ●
- Screwing unit with CN positioning on Z-axis ○
- Automatic screws loading ●
- Second screw management ○

LAYOUT

Left version (left to right)



Right version (right to left)



PROFILE POSITIONING AND CLAMPING

- Profile feeding by motorised rolls ●
- Infeed and outfeed roller conveyer ●
- Standard counterblocks ●

Voilàp S.p.A.
Via Archimede, 10
41019 - Limidi di Soliera (MO)
ITALY

Tel 059 895411
Fax: 059 859404
P.IVA e C.F. 02057270361
info@somecopvc.com
www.somecopvc.com

The right to make technical alterations is reserved.



DIMENSION AND WEIGHT

Dimensions L x P x H (mm)	5.700 x 1.215 x 1.500
Min. ÷ max. profile length (mm)	325 ÷ 2.500
Min ÷ max profile dimensions (mm)	L = 40 ÷ 140 / H = 40 ÷ 180
Min ÷ max screwing height (mm)	18 ÷ 168
Maximum weight of profile to be loaded (kg)	15
Weight (kg)	360

COMMAND AND CONTROL UNIT

Electric cabinet	●
Pneumatic panel	●
PLC with x86 processor - 500 MHz	●
15" TFT graphic colour touch screen	●
10 MB RAM memory	●
64 MB Compact Flash	●
USB ports	2
RJ45 network card	○

Included ● Available ○