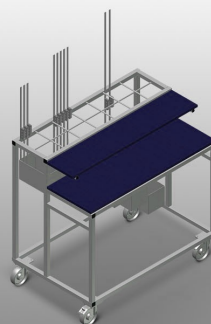
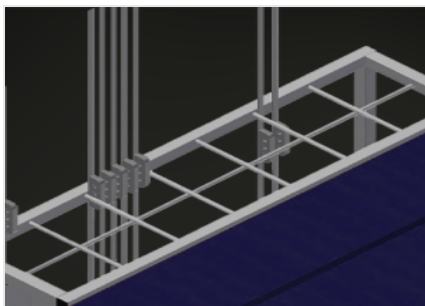


BW 7002

Transport and trolleys

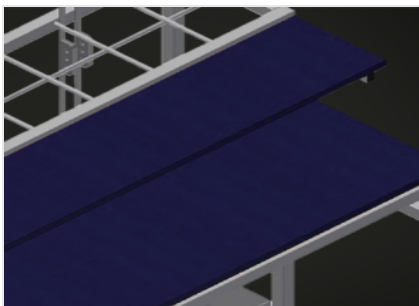


Hardware trolley for providing an organised arrangement of hardware. Stable steel construction. Two wooden shelves. Equipped for the mounting of a punch press. Four swivel castors, two of which with locking stop.



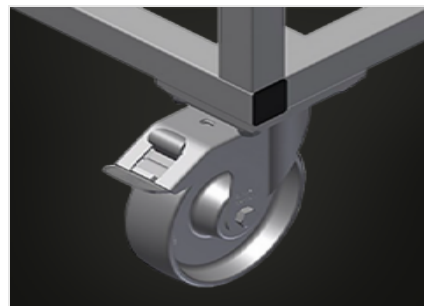
Compartments

Seven hardware compartments, arranged on several levels, compartment size 190 x 265 mm



Storage area

Two storage areas for tools and accessories



Casters

Four casters, two of which have a fixing brake, provide a high degree of mobility and easy, safe handling

**BW 7002 / TRANSPORT AND TROLLEYS****DIMENSION AND WEIGHT**

Length (mm)	1.100
Width (mm)	710
Height (mm)	1.090
Weight (kg)	50

STORAGE CAPACITY

Compartments	7
Wooden shelves	2
Load capacity (kg)	300

CHARACTERISTICS

Swivel castors	4
Swivel castors with locking stop	2
Swivel castors diameter (mm)	125

Included ● Available ○