

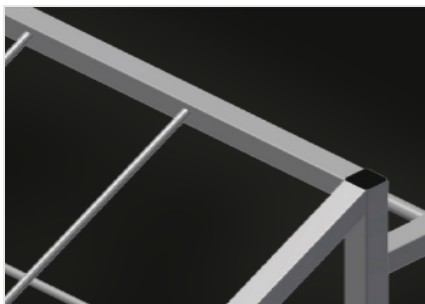


## AW 1100

Transport and trolleys

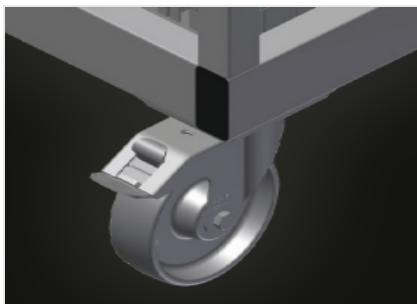


Rack for providing a sorted selection of cut-to-length reinforcement profiles. Stable steel construction. Vertical storage of steel profiles. Compact outside dimensions. Well-organised arrangement of fixed-length profiles. Transportable with forklift truck. Option: mobile as trolley on request (castors cmpl.).



**Compartments**

20 compartments, 200 x 200 mm



**Castors, cmpl.**

Two casters with brake and two fixed rollers provide mobility in all directions, roller diameter 125 mm



AW 1100 / TRANSPORT AND TROLLEYS

CHARACTERISTICS

Length (mm)	1.100
Width (mm)	900
Height (mm)	1.100
Compartments	20
Weight (kg)	80
Load capacity (kg)	600
Mobile as trolley (Two swivel casters with locking stop and two fixed casters - Castors diameter 125 mm)	<input type="radio"/>

Included ● Available ○