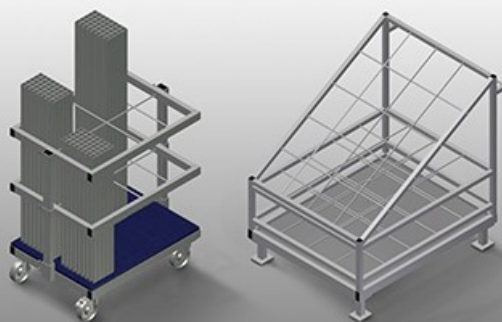




AW

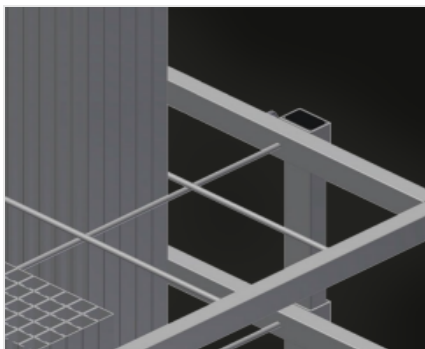
Transport and trolleys



Trolley for transporting and providing a sorted selection of cut-to-length reinforcement profiles. Stable steel construction. Vertical storage and transportation of steel profiles. Compact outside dimensions. Well-organised arrangement of fixed-length profiles.

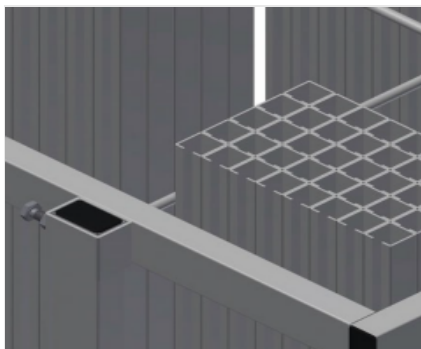
AW 800: Four swivel castors, two of which with locking stop.

AW 1100: Transportable with forklift truck.



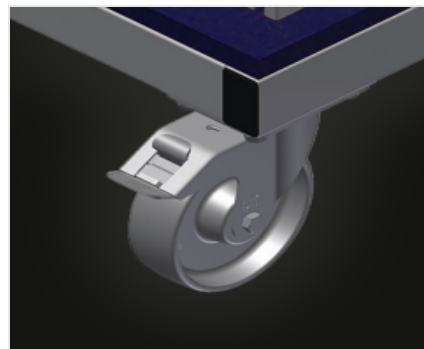
Compartments AW 800

Six compartments, compartment size 190 x 265 mm



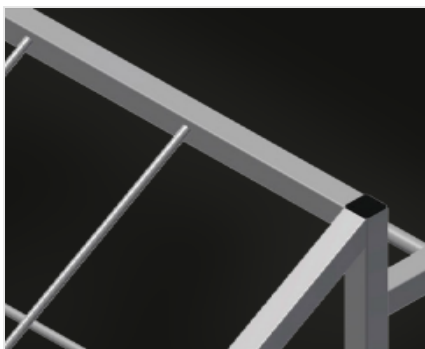
Grid frame AW 800

Two grid frames with height adjustment



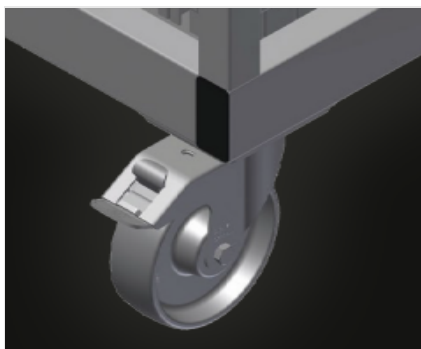
Casters AW 800

Four casters, two of which have a fixing brake, provide a high degree of mobility and easy, safe handling



Compartments AW 1100

20 compartments, 200 x 200 mm



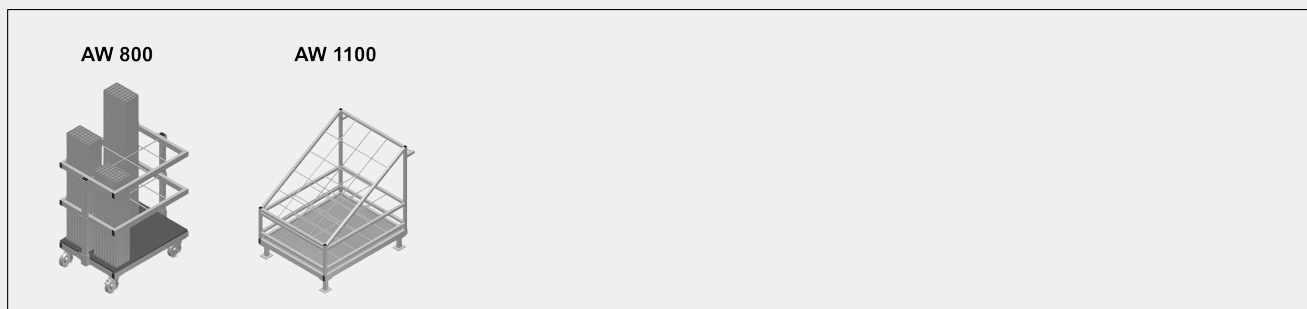
Casters, compl. AW 1100 (Optional)

Two casters with brake and two fixed rollers provide mobility in all directions, roller diameter 125 mm



AW / TRANSPORT AND TROLLEYS

MODELS



DIMENSION AND WEIGHT

| | |
|-------------|-------------|
| Length (mm) | 800 / 1.100 |
| Width (mm) | 600 / 900 |
| Height (mm) | 960 / 1.100 |
| Weight (kg) | 35 / 80 |

STORAGE CAPACITY

AW 800 / AW 1100

| | |
|--------------------|-----------|
| Compartments | 6 / 20 |
| Load capacity (kg) | 400 / 600 |

CHARACTERISTICS

AW 800

| | |
|----------------------------------|-----|
| Swivel castors | 4 |
| Swivel castors with locking stop | 2 |
| Swivel castors diameter (mm) | 125 |

AW 1100

| | |
|--|-----------------------|
| Mobile as trolley (Two swivel castors with locking stop and two fixed castors - Castors diameter 125 mm) | <input type="radio"/> |
|--|-----------------------|

Included ● Available ○